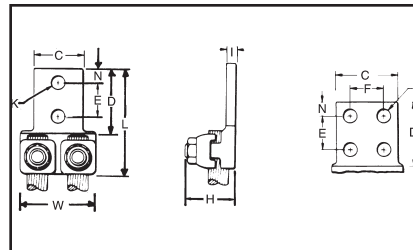
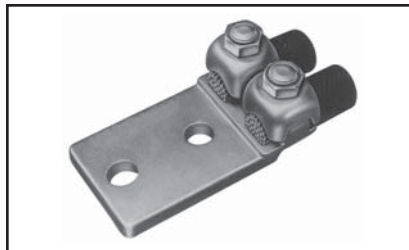


TYPE Q2A

QIKLUG™

For Copper Cable

Compact, high copper alloy terminal for joining two cables to equipment pads or bars. Each element accommodates a wide range of cable. One-wrench installation.



Catalog Number*	Conductor	No. of Holes in Pad	C	D	E & F	H	K	Stud Hole Size	L	N	T	W	Recommended Tightening Torque in-lb
Q2A1C-2	4 Str. - 1 Str.	2	1-1/2	1-7/8	1	1-1/16	7/16	3/8	2-7/8	7/16	7/32	1-13/16	150
Q2A26-2N	1/0 Str. - 2/0 Str.		1-5/8	3-1/8	3/4	1-3/16	9/16	1/2	4-3/16	5/8	1/4	1-15/16	180
Q2A28-2N	3/0 Str. - 4/0 Str.	1-7/8	1-3/8		4-3/8	2-1/8			250				
Q2A28-4N		4	3	1-11/16	4-1/2	5/16	2-1/8	325					
Q2A31-2N	2	2-3/8	1-11/16						4-1/2	5/16	2-1/8	325	
Q2A31-4N	4	3		2	4-11/16	3/8	3	375					
Q2A34-2N	2	2-1/2	2-7/16						5	7/16	3-3/4	500	
Q2A34-4N	4	3		2-3/4	5-1/4	1/2	4-11/32	500					
Q2A40-2N	2	3	2-7/16						5	7/16	3-3/4	500	
Q2A40-4N	4	3		2-3/4	5-1/4	1/2	4-11/32	500					
Q2A44-4N	4	3-1/4	2-3/4						5-1/4	1/2	4-11/32	500	
Q2A46-4N	4	3-1/2		3-1/4	3-1/8	5-1/2	11/16	5					600

* "N" indicates NEMA standard stud holes.

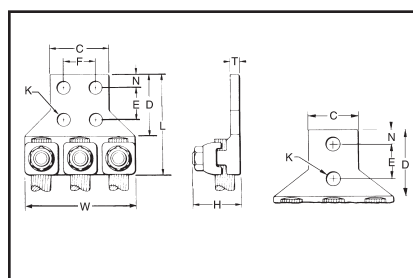
✓ All 4N items see note LIGHTNING PROTECTION INFO.

TYPE Q3A

QIKLUG™

For Copper Cable

Compact, high copper alloy terminal for joining three cables to equipment pads or bar. Each element accommodates a wide range of cable. One-wrench installation.



Catalog Number*	Conductor	No. of Holes in Pad	C	D	E & F	H	K	Stud Hole Size	L	N	T	W	Recommended Tightening Torque in lb
Q3A28-2N	3/0 Str. - 4/0 Str.	2	1-7/8	3-1/8	1-3/4	1-3/8	9/16	1/2	4-5/16	5/8	1/4	3-3/16	250
Q3A28-4N	3/0 - 4/0 Str.	4	3			1-3/8			4-3/8				
Q3A31-2N	250 - 350 kcmil	2	2-3/8	3-1/8	1-3/4	1-11/16	9/16	1/2	4-7/16	5/8	5/16	4-1/16	325
Q3A31-4N		4	3			1-11/16			4-7/16				
Q3A34-2N	2	2-1/2	1-15/16	3-1/8	1-3/4	9/16	1/2	4-3/4	5/8	5/8	3/8	4-9/16	375
Q3A34-4N	4	3											
Q3A40-4N	4	3	2-7/16	3-1/8	1-3/4	9/16	1/2	5	5/8	5/8	7/16	5-13/16	500
Q3A44-4N	4	3-1/4											
Q3A46-4N	4	3-1/2	3-1/4	3-1/8	5-1/2	11/16	7-7/8	600					

* "N" indicates NEMA standard stud holes.

Blue highlighted items are industry standard and most frequently ordered.